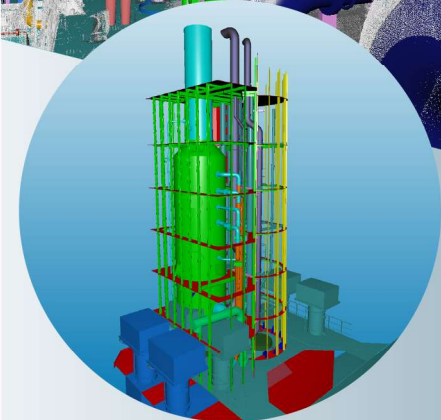
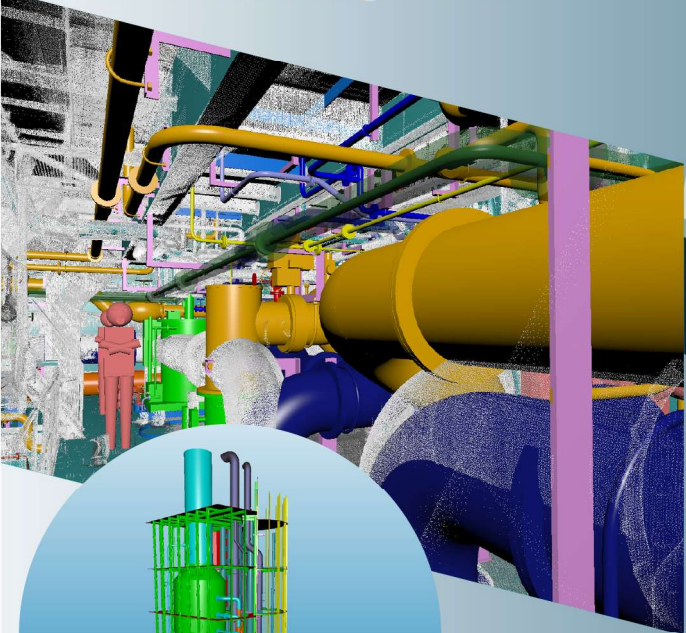


TTSP engages in the reverse engineering services using multi-CAD platforms employed with the adaptation of Japanese shipbuilding technology.

We have produced prominent reverse engineering projects such as *BWMS technologies and SOx Scrubber Retrofitting project makers*; attaining the client's requirement coupled with the latest international shipbuilding standard.



CONTACT US:

- +63-32-230-8478 to 80
- West Cebu Industrial Park (WCIP) - Special Economic Zone (SEZ), Buanoy, Balamban, 6041 Cebu, Philippines
- corporate_communicationstsuneshi-tech.com
- Tsuneshi Technical Services (Phils.), Inc.
- <http://www.tsuneshi-tech.com/>



TSUNEISHI
TSUNEISHI TECHNICAL SERVICES (PHILS.), INC.



TSUNEISHI
TSUNEISHI TECHNICAL SERVICES (PHILS.), INC.



RETROFITTING



REVERSE ENGINEERING

*"FURNISHED INTEGRITY TO
UNCEASING DEVELOPMENT"*



<http://www.tsuneshi-tech.com/> Inc.

INITIAL ANALYSIS

Reverse Engineering Project starts by conducting an initial analysis of the current condition of the vessel. The 3D Laser Scanning activity is performed to replicate the actual vessel's structure and transforms it into digital data.

ACCOMPLISHES:

- Machine Arrangement Analysis
- Piping Diagram Analysis
- Pipe Material Analysis

3D MODEL (FULL SET)

In developing a 3D Model, we utilize CADMATIC to provide conceptual 3D Image to our clients.



ACCOMPLISHES:

- Equipment Modeling
- Pipe & Pipe Support Modeling
- Gratings & Auxiliary Machinery Seat Modeling

DETAILED AND PRODUCTION DRAWING

Detailed and Production Drawing allows clients to provide inputs for material ordering and guide the factory developers to properly interpret installation details. This includes providing data for factory production.

ACCOMPLISHES:

- Detailed drawings
- Production drawings
- 2D Outputs

