

TSUNEISHI

TSUNEISHI TECHNICAL SERVICES (PHILS.), INC.

DELIVERS:



2D AS-BUILT DRAWINGS

Detailed elevation, section & plan drawings can be produced to conventional drawing standards.



3D POINTCLOUD DATA

The millions of 3D points captured are often unified and delivered directly to the client.



3D MODELS

Parametric 3D models can be created to allow clients the benefit of 3D capability.



ANIMATION CLIPS

Pointcloud animations and high-resolution renders are created to allow detailed visualization.



360° IMAGERY

360-degree images are captured at each scan position allowing virtual site visits and data interrogation.



MESH MODELS

Very precise 3D CAD models can be created by overlaying CAD surface over the 3D scan points.



RETROFITTING

Old design can be upgraded to new and advance design by adding some system or repair.



TSUNEISHI

TSUNEISHI TECHNICAL SERVICES (PHILS.), INC.

CONTACT US :



+63-32-230-8478 to 80



West Cebu Industrial Park (WCIP) - Special Economic Zone (SEZ), Buanoy, Balamban, 6041 Cebu, Philippines



corporate_communications@tsuneishi-tech.com



Tsuneishi Technical Services (Phils.), Inc.



<http://www.tsuneishi-tech.com/>



3D LASER SCANNING & ENGINEERING SERVICES



DESIGN BEYOND BORDERS

Your Facility at the Palm of Your Hands

3D Laser scanning provides the ability to digitally capture multiple complex objects and buildings using fast and accurate laser measurements, creating a virtual world of an existing environment. This virtual world allows the objects and buildings to be understood remotely in ways that were previously not possible. It enables the end-users to view real world environments to make better informed decisions with millions of 3D data points being recorded in seconds.

Industry Application Advantages

- Replace time consuming manual field checks with highly detailed and accurate measurements.
- Digital Twin creation for Industry 4.0 usage.
- Increase efficiency and eliminate waste within operations.
- Create and update as-built drawings for reverse engineering.
- Document current conditions prior to costly relocation to ensure proper set up the first time.
- Conceptual design validations.

The TTSP Commitment

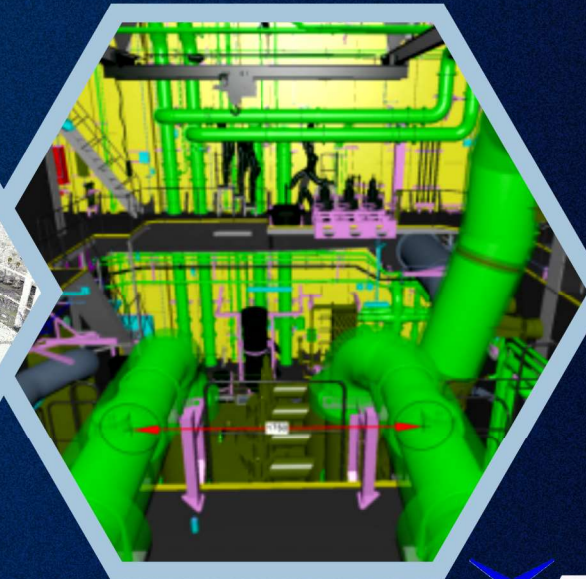
We work closely with our clients to ensure they receive deliverables that improve the efficiency of their work. The speed, accuracy, and quantity of data captured is unmatched by any other means of field checking. Our technology and expertise have allowed us to expand our footprint from regional to global while controlling costs and maintaining tight customer schedules. We are committed to continuously improve our capabilities and stay on the leading edge with our 3D laser scanning equipment and software to produce the highest quality output to our clients.



ACTUAL



POINTCLOUD DATA



3D MODEL